

# BEYOND

## GREEN: WELLNESS

**04 April (Saturday)**

09:00 am - 02:00 pm

**PAM Centre**

99L, Jalan Tandok, Bangsar, 59100 Kuala Lumpur



### An unConference on Biophilic Design

We crave nature — and can testify to how good it feels to interact with the natural world; but until recently, we had little but our intuition to back this up

Increasingly, as more scientific evidence emerges and catches up with our intuition, green building projects have attempted to incorporate biophilic design, but these efforts are often less than convincing albeit well intentioned; as our experience with green building rating has trained us to work to meet the letter of the standards and not beyond

Though its benefits can be quantified, biophilic design draws as much from intuition and emotion as it does knowledge and formal training, which requires a shift in design thinking. To accelerate this shift, we need built examples to demonstrate how biophilic design, when used as the design driver, can positively transform both the design process and the resulting building environment for us

Fortunately, with each passing year, we have more of such projects in this region and this unconference is curated with these built examples to illuminate the process and showcase the positive impacts of biophilic design on energy performance, comfort, health, productivity and mindfulness

Remember to collect your free trees for registered participants from the Rewilding Roadshow by Free Tree Society

FEB → APR → JUL → AUG

KUALA LUMPUR ARCHITECTURE FESTIVAL 2020



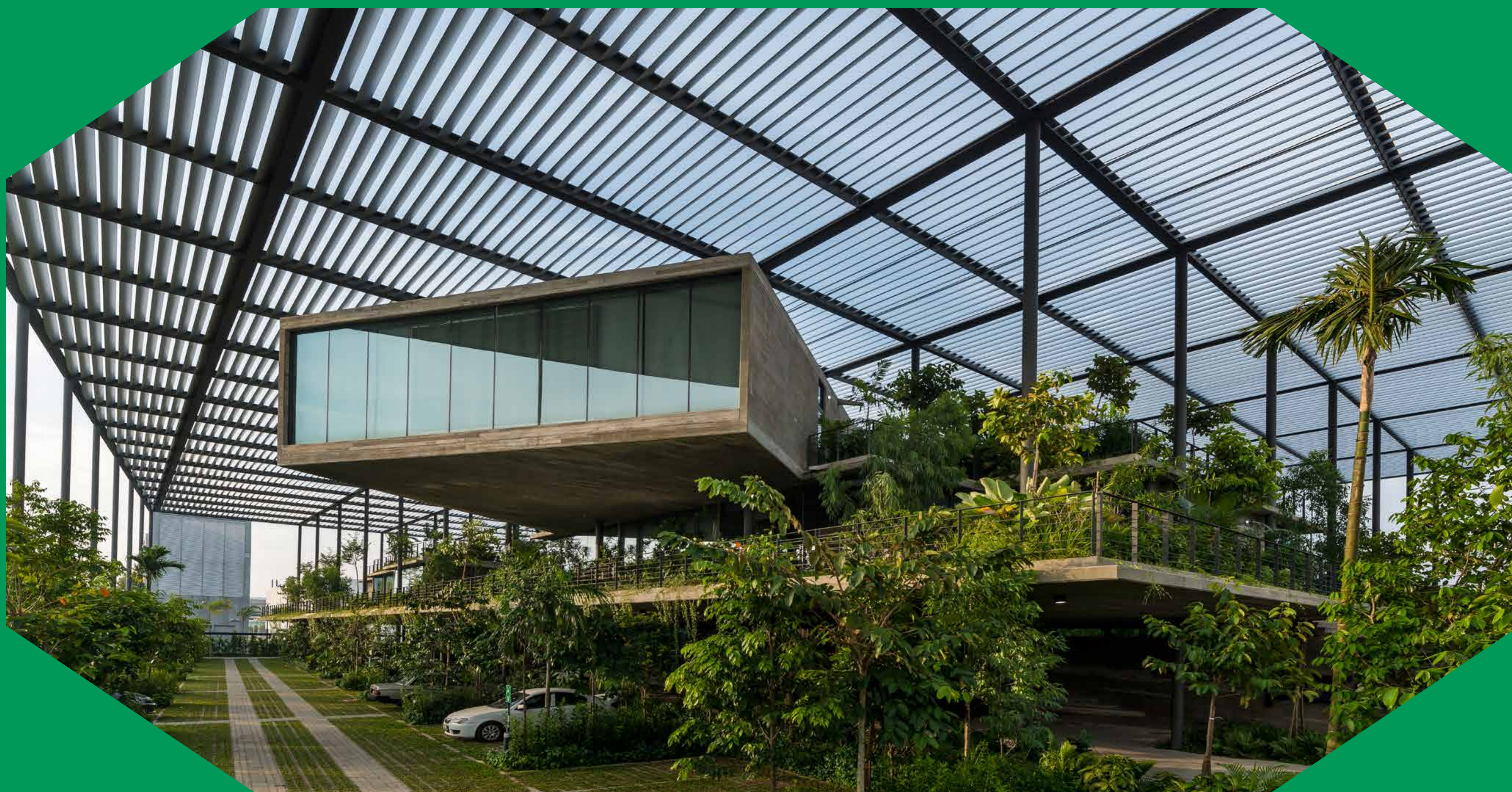
**Samantha Allen**  
Hong Kong

## THE ROLE OF BIOPHILIA IN WELL-BEING

Samantha Allen is a Director for International WELL Building Institute™ (IWBI) Asia. It is a public benefit corporation with a mission to improve human health and well-being through the built environment. Her background in scientific research specialises in environmental science, material safety as well as organisational policy



FEB —→ APR —→ JUL —→ AUG

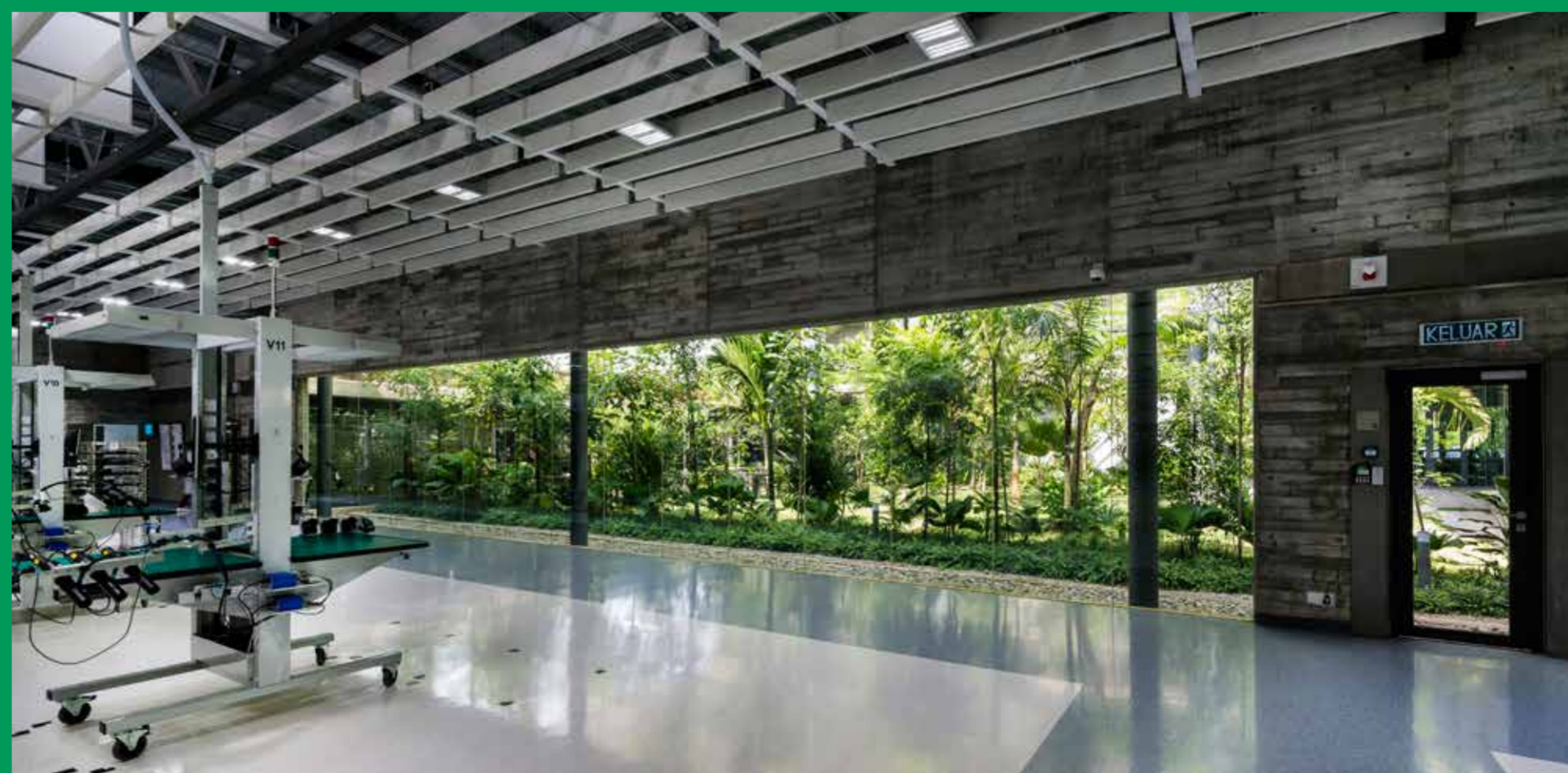


## Gregers Reimann

Malaysia

PARAMIT "FACTORY IN THE FOREST"

Gregers Reimann is the managing director of IEN Consultants Sdn Bhd, one of the pioneering green building consultancies in Malaysia. He has a keen interest to pursue innovative and integrated design solutions in bridging the gap between architects and engineers



FEB → APR → JUL → AUG



## LAr. Phua Chin Eng

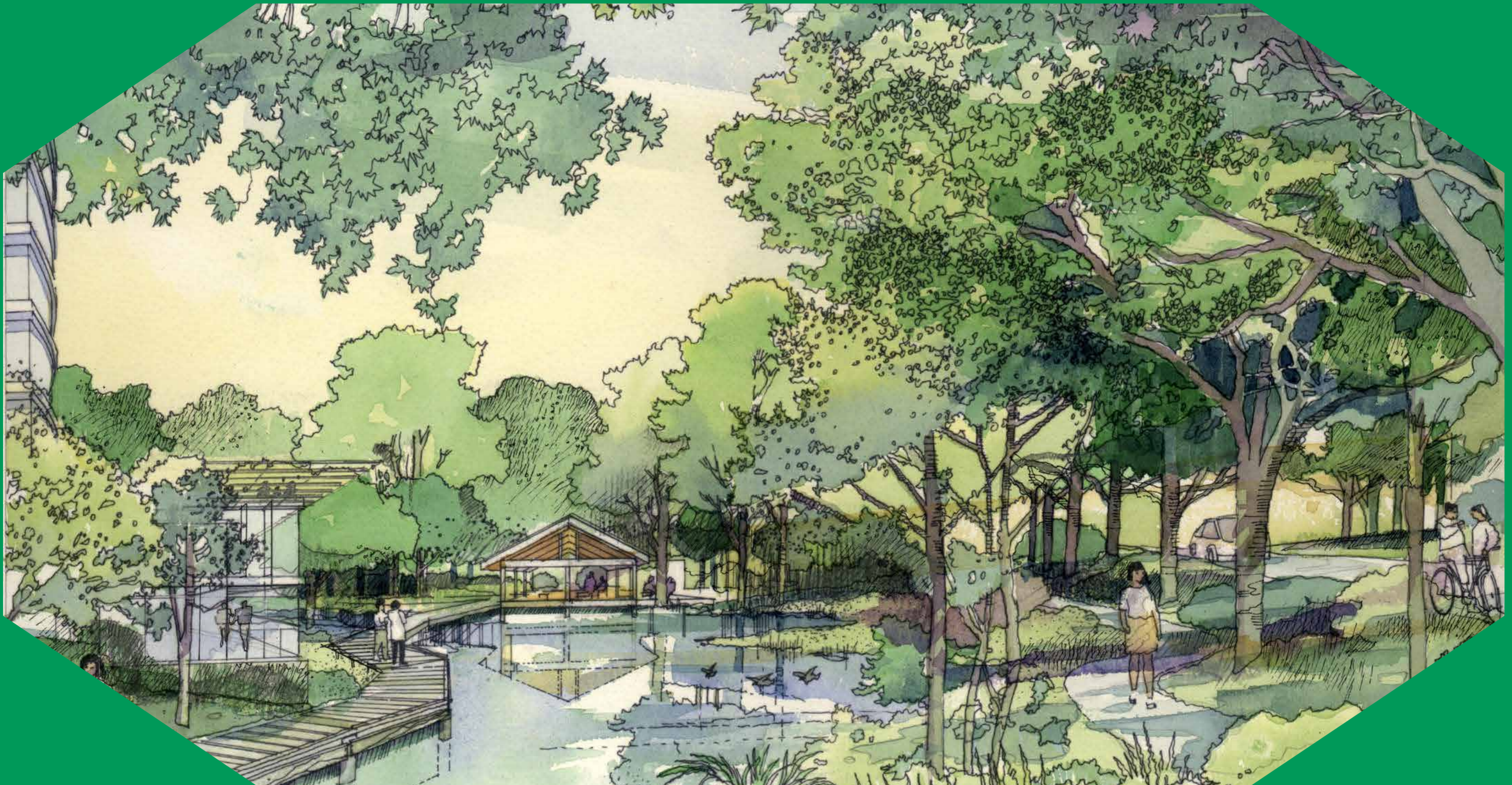
Malaysia

BIOPHILIC DESIGN -  
BRINGING THE OUTDOOR INSIDE

LAr. Phua Chin Eng is one of the directors of Landart Design, a landscape + interior design studio with a team of designers from diverse background. Their design philosophy is to create an ensemble that engages the senses through the elements of texture, colour, light, shape and space that show the natural balance between function and art of a successful design



FEB → APR → JUL → AUG



## LAr. Alfred Lee Fei Chong

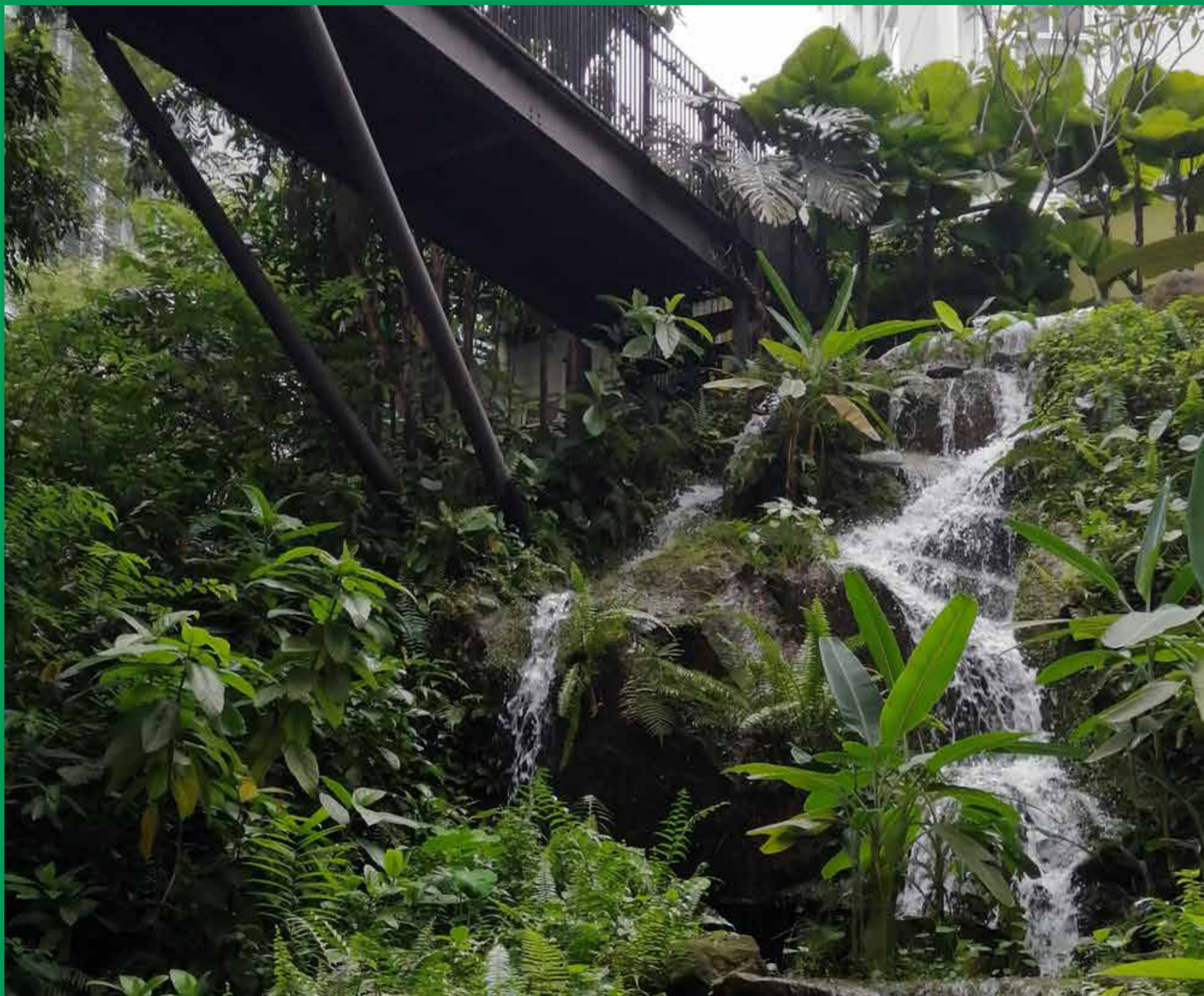
Singapore

REIMAGINING LANDSCAPE PLANNING  
AND DESIGN FOR UNIVERSITY

Alfred Lee has a reputation for creating sustainable and timeless landscapes, with meticulous attention to detail and materiality. As a Director at STX, Alfred is involved in a variety of award-winning residential, commercial and institutional projects across Asia



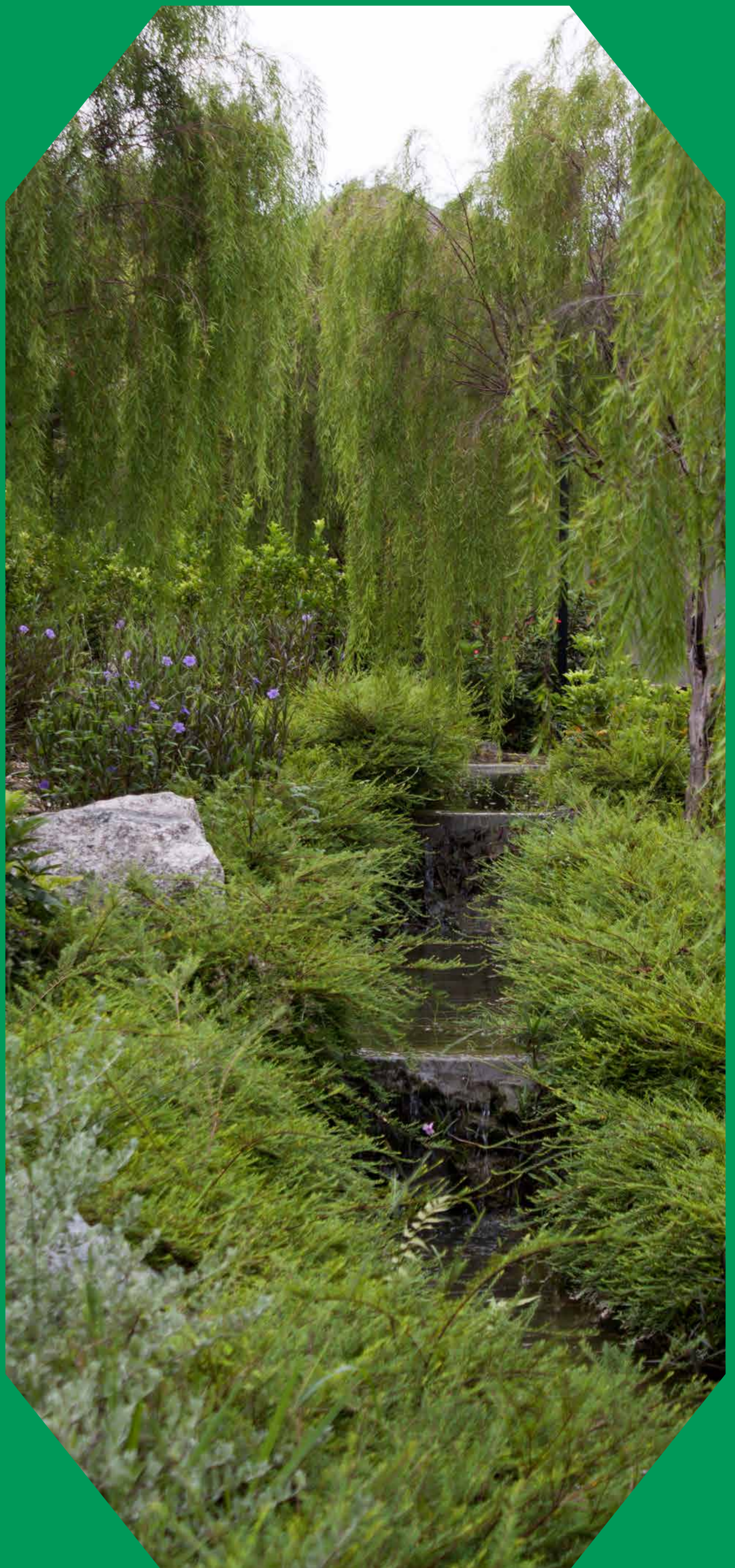
FEB → APR → JUL → AUG



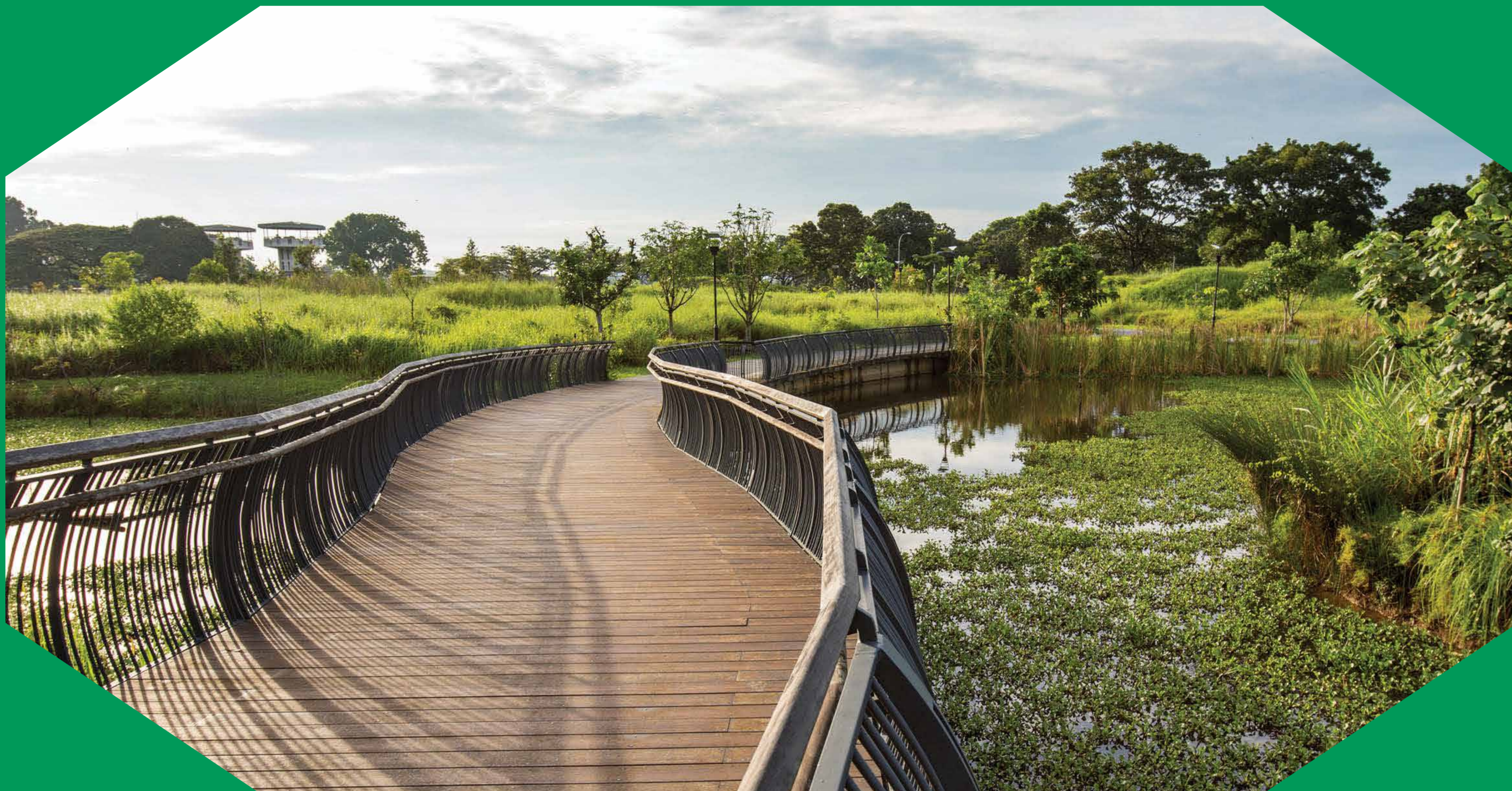
**LAr. Lee Wern Ching**  
Malaysia

## BIOPHILIC LANDSCAPE - A MALAYSIAN EXPERIENCE

Lee Wern Ching is a corporate member of Institute Landscape Architects Malaysia (ILAM), a professional body for landscape architects in Malaysia. Upon graduation, he joined ACL Asia and Seksan Design. In 2008, he established SD2 Sdn. Bhd. with Ng Sek San and Ong Pay Chee



FEB → APR → JUL → AUG



**Jelle Therry**  
Singapore

CREATING LIVABLE CITIES THROUGH  
BLUE AND GREEN INFRASTRUCTURE

Prior to joining Ramboll Studio Dreiseitl as Design Director, Jelle Therry was the design manager and project leader at West8 in Rotterdam and New York. He has over 19 years of professional experience designing and managing both large and small scale landscape projects around the globe



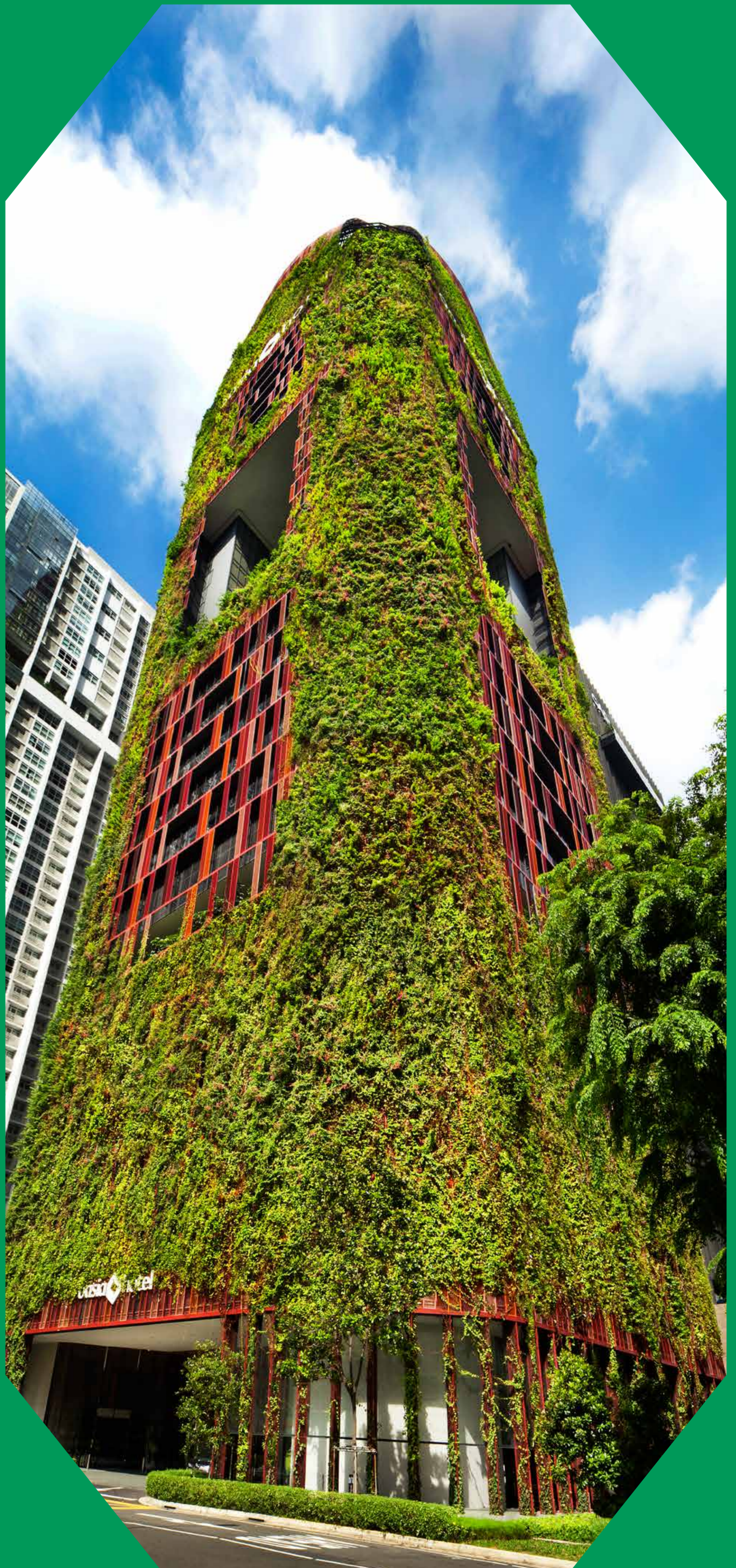
FEB → APR → JUL → AUG



**Dr Nirmal Kishnani**  
Singapore

## THE BIOPHILIA QUESTION: DOES NATURE ACTUALLY MAKE A DIFFERENCE?

Combining 15 years' experience in design practice with over a decade of research and teaching, Nirmal Kishnani scrutinises the space between frontline theories and drawing-board pragmatism



FEB → APR → JUL → AUG